

Hardwired lock Yellowbox Smart Lock

by Yellowbox

Users open their locker with a tap of a button in the app. The Yellowbox system provides incredible flexibility and simplicity to End of Trip facilities. Smart lock is water resistant and doesn't require hardwiring, network connectivity or a central terminal.

SPECIFICATIONS

Function: RFID

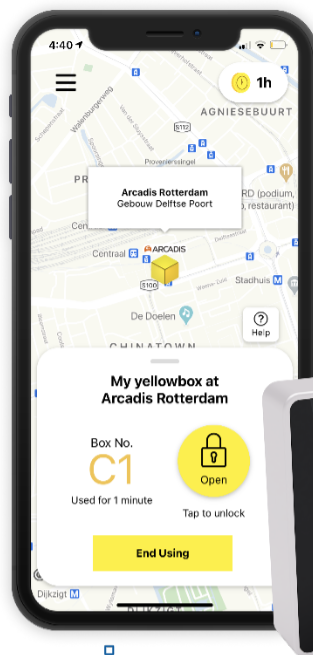
Type: Hardwired

Mode: Dedicated / Shared

Door thickness: 1 mm - 30 mm



This product meets Australian accessibility standards.



Open with app

Unlock within the app through Bluetooth. No need for keys or cards.

Open without phone

Users can set a keypad code to unlock without phone.



Self-Serve with In- app Support

Users onboard without a middleman.



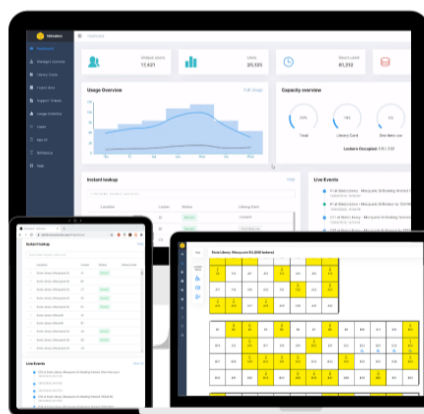
Master key

Management app is the master key. Open single locker or all at once.



Custom settings

Set times when the lockers are available to users. Send custom notifications to users.



Visibility over locker status

View status of lockers, e.g. in use, available.



Specified access control

Set custom groups with access to specified lockers.



Audit trail snapshot

View recent bookings and opens through the app.



Analytics and data

Visual representation of how lockers are used. Downloadable data formats.

PRODUCT SPECIFICATIONS (MM)

Lock name

H

W

D

Yellowbox Hardwired Smart Lock -

65

65

15

1300 LOCKIN
lockin.com.au

Lockin

Made for life.